

**Special Plastic Module for semiconductor industry s.r.l.**



**S.P.M. s.r.l.**  
**Cairo Model**

© S.P.M. Italy s.r.l.

**HYBRID SYSTEM FOR 3061 LPE CHAMBER &  
PROCESS KIT CLEANING**

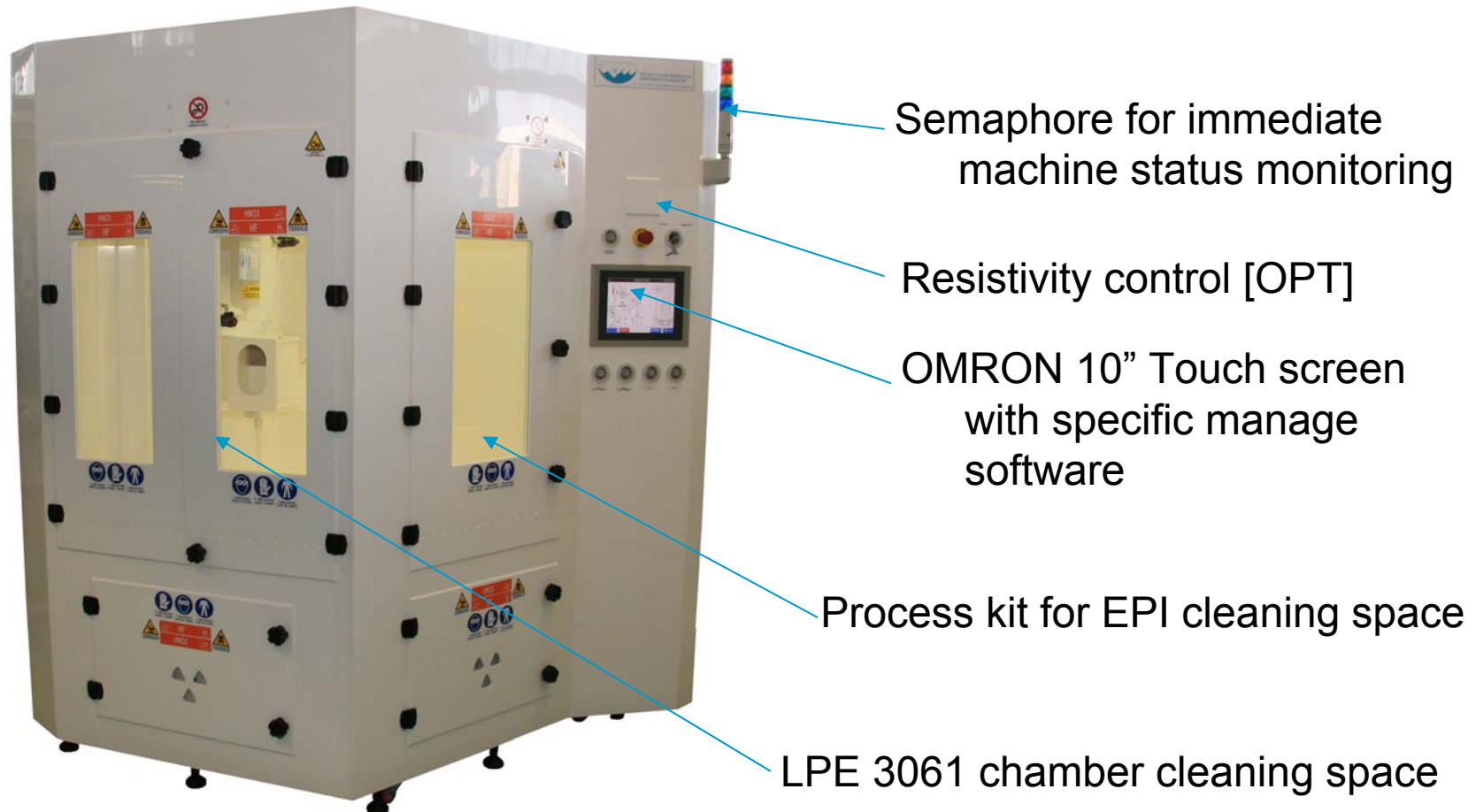


# Cairo Model



## CAIRO MODEL

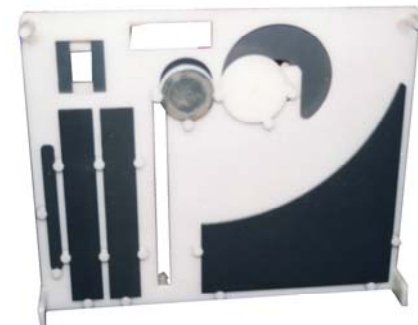
### *HYBRID SYSTEM FOR 3061 LPE CHAMBER CLEANING & PROCESS KIT*





## CAIRO MODEL

The Cairo Model can clean:



*LPE 3061 Process kit Holder*

*LPE 3061 chamber and Process kit for EPI with special parts holder*



## CAIRO MODEL

### LPE 3061 chamber cleaning space



© S.P.M. Italy s.r.l. - Cairo Model - 2011



## CAIRO MODEL

Equipped with (main component):

Accurate chemical dosing system for chemical mixturing



N2 and H2ODI heat exchangers



Chamber locking with presence sensors





## CAIRO MODEL

Equipped with (main component):

### Water group





## CAIRO MODEL

Equipped with (main component):

Chemical filling



Filling system from bottle  
(model without CDS filling)

OR



Internal day tank  
(model with chemical  
filling from CDS)

*CDS: Chemical Delivery System. We can supply also this equipment.*

© S.P.M. Italy s.r.l. - Cairo Model - 2011



## OPTIONALS



### ▣ Process kit tank

Process kit tank in high density Pe for small parts clean up

---

### ▣ Process kit holder

Holder for small parts support LPE 3061 chamber

---

### ▣ Trolley

Special Trolley for LPE 3061 chamber + parts, in white PPS

---

### ▣ Chamber for shielded parts

Special chamber for shield part cleaning in Pe material



## PROCESS KIT TANK



HI density PE tank  
with manual cover



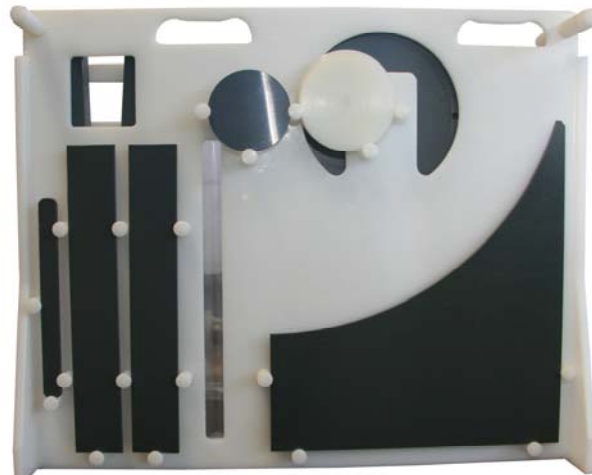
Special support for  
holder



Specific holder for  
small parts

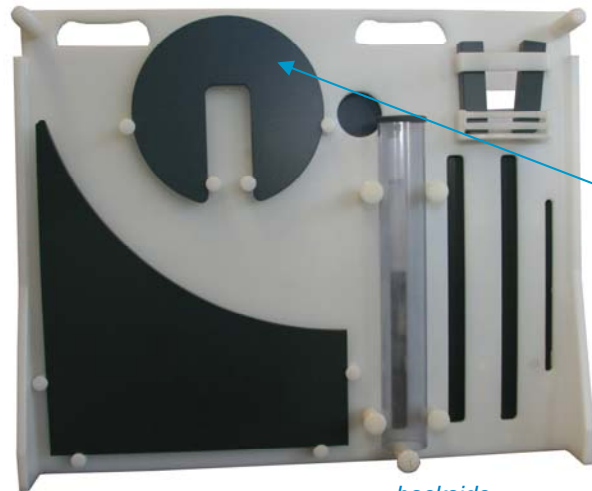


## PROCESS KIT HOLDER



*frontside*

Specific design for small parts support.



*backside*

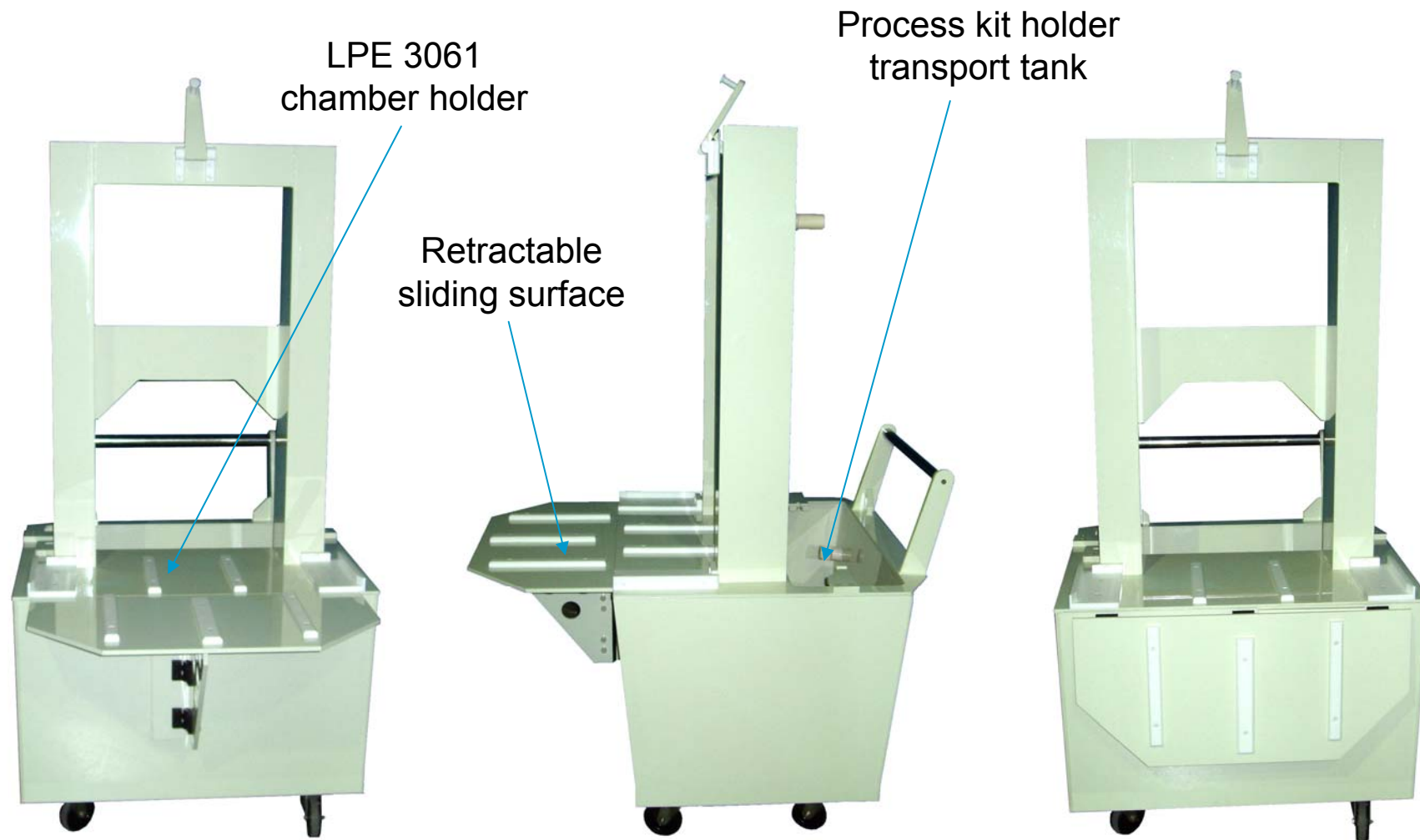
Simulation of quarts small parts



Inside the process kit tank

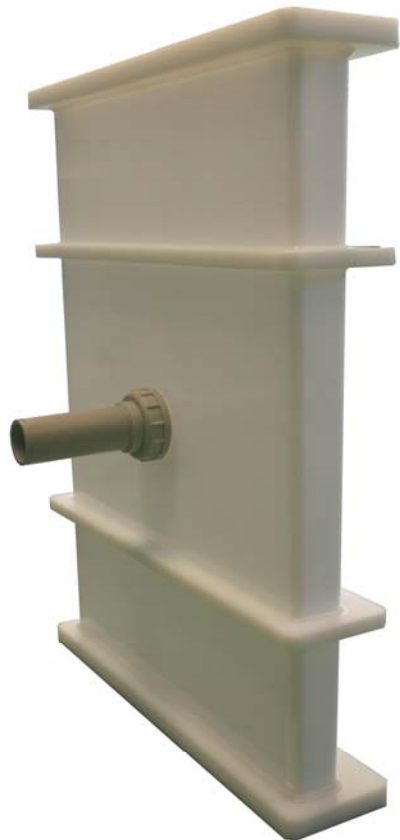


## TROLLEY FOR EPI



© S.P.M. Italy s.r.l. - Cairo Model - 2011

## CHAMBER FOR SHIELDED PARTS



Specific space for shielded parts cleaning

This special chamber fit on the LPE3061 cleaning space

